

# Frequently Asked Questions

## Matakitaki Hydroelectric Investigations

19 June 2009

This fact sheet sets out answers to frequently asked questions about Network Tasman Ltd pre-feasibility investigations into hydroelectric power generation from the Matakitaki River system.

### Content

- What is Network Tasman?
- Why do we want to generate electricity?
- What are we considering?
- What is our consultation process?
- Next Steps

For further information email [info@networktasman.co.nz](mailto:info@networktasman.co.nz)

## What is Network Tasman?

### The local electricity supplier

Network Tasman is the local consumer-owned electricity supplier. It is owned by local electricity consumers through the Network Tasman Trust. Network Tasman Limited owns the regional electricity distribution systems in much of the Top of the South Island. It is now investigating local generation of sustainable power for its consumers.

The picture below shows how Network Tasman fits into the New Zealand electricity generation, distribution and retailing system.



Consumers own the Network Tasman Trust, which in turn owns Network Tasman Limited.

## What is Network Tasman?

### National context

How power gets to you in the Tasman/Nelson Region

<b>Generation</b>	Electricity supplying the Tasman/Nelson region is generated by hydro electric power stations throughout the South Island
<b>National Transmission System Grid</b>	TransPower owns and operates the national grid. The system uses high voltage 220kV and 110kV lines and the equipment used to connect generators and distributors to the national grid.
<b>Distribution Network</b>	Network Tasman owns and operates the power lines and equipment used to transport power from the national grid to your property boundary.
<b>Retailers &amp; You</b>	To get electricity to your property the electricity retailers, such as Contact, Meridian, Trustpower & Genesis have agreements with Network Tasman permitting them to use the distribution network to transport electricity to you.

### Our vision, mission and objectives:

#### Vision:

To be a successful network services company for the benefit of our consumers.

#### Mission:

To own and operate efficient, reliable and safe electricity networks and other complementary businesses while increasing customer value.

#### Key Business objectives are therefore to:

- Deliver reliable and high quality network services
- Improve operational efficiency and effectiveness
- Ensure regulatory compliance
- Seek new growth opportunities related to or complementary to our principal activity
- Increase consumer value

# Why do we want to generate electricity?

## 1 History

- Mid 1990's focus on generation self sufficiency for Nelson region
- Matiri investigated
- Gowan investigated
- Other investigations underway
- Involvement in the Buller Water Conservation Order. Network Tasman Successfully opposed the Matiri and Matakaitaki becoming part of the Order, for the purposes of electricity generation.
- Then the Bradford Reforms 1998 stopped Network Tasman becoming a generator

## 2 Bradford reforms

- Prohibited Network Tasman and other lines companies from retailing electricity
- Prohibited Network Tasman from generation
- Network Tasman sold electricity retailing business to Contact Energy
- Network Tasman sold rights in electricity generation

## 3 Further electricity industry reforms

- Rules relaxed in 2008
- NTL now able to consider generation and retailing

## 4 Why generate locally?

- Our long term vision is to establish a portfolio of renewable energy
  - hydro
  - wind
  - solar
- Storage important

## **What are we considering?**

### **Our hydro- generation investigations**

- In 2008 investigations commenced into what hydro generation options may exist on sections of the Matakītaki and Glenroy
- These rivers had been excluded from the Buller Conservation Order
- Consultant engaged to undertake pre feasibility study of what opportunities may exist
- Pre-feasibility investigations only

### **Definition of a pre-feasibility study**

- In large projects, a preliminary study undertaken to determine if it would be worthwhile to proceed to the feasibility study stage.

### **Definition of a feasibility study**

- To determine if a project:
  1. is technically feasible
  2. is feasible within the estimated cost
  3. will be profitable
  4. has environmental and recreational issues.

This is the next step if the Board decides to proceed

## Matakitaki investigation so far:

### Rejected as possibilities by the consultants:

1. Glenroy River
2. Run of river schemes

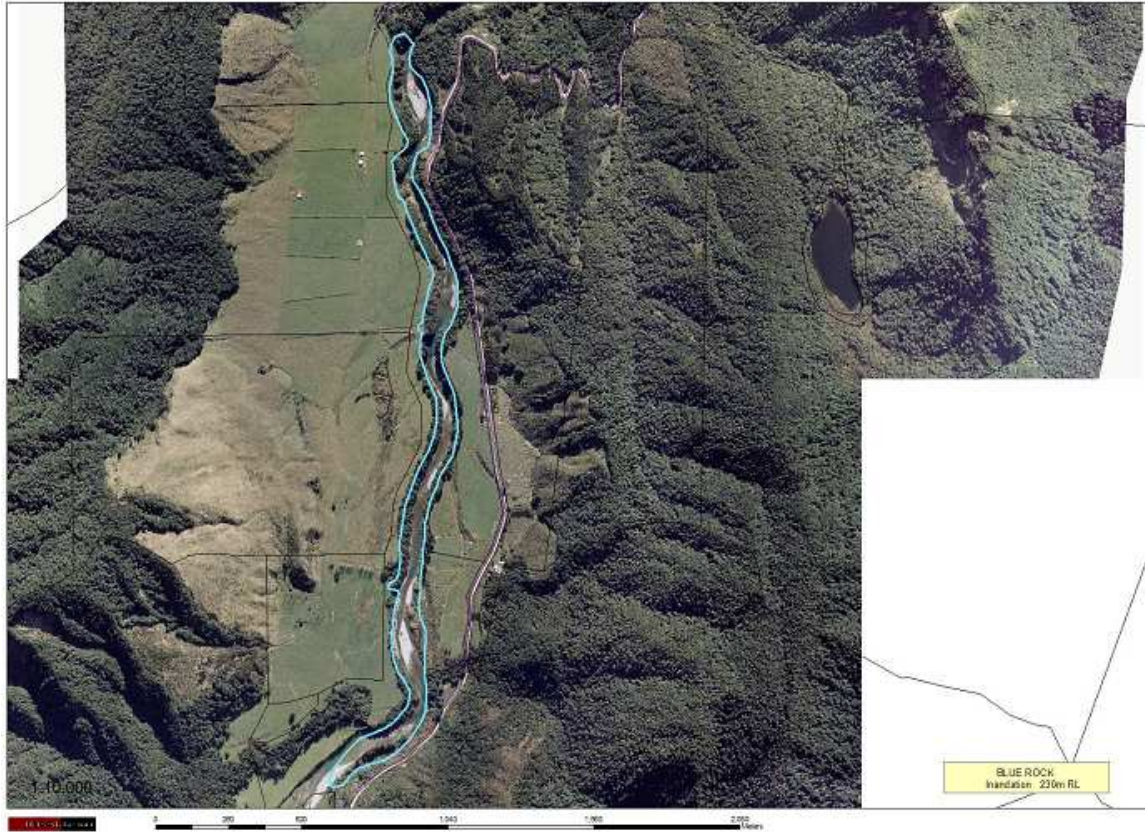
### Potential opportunities identified by the consultants for further consideration:

1. Blue Rock
2. Horse Bridge
3. Wheeler's Creek
4. Mammoth Gorge



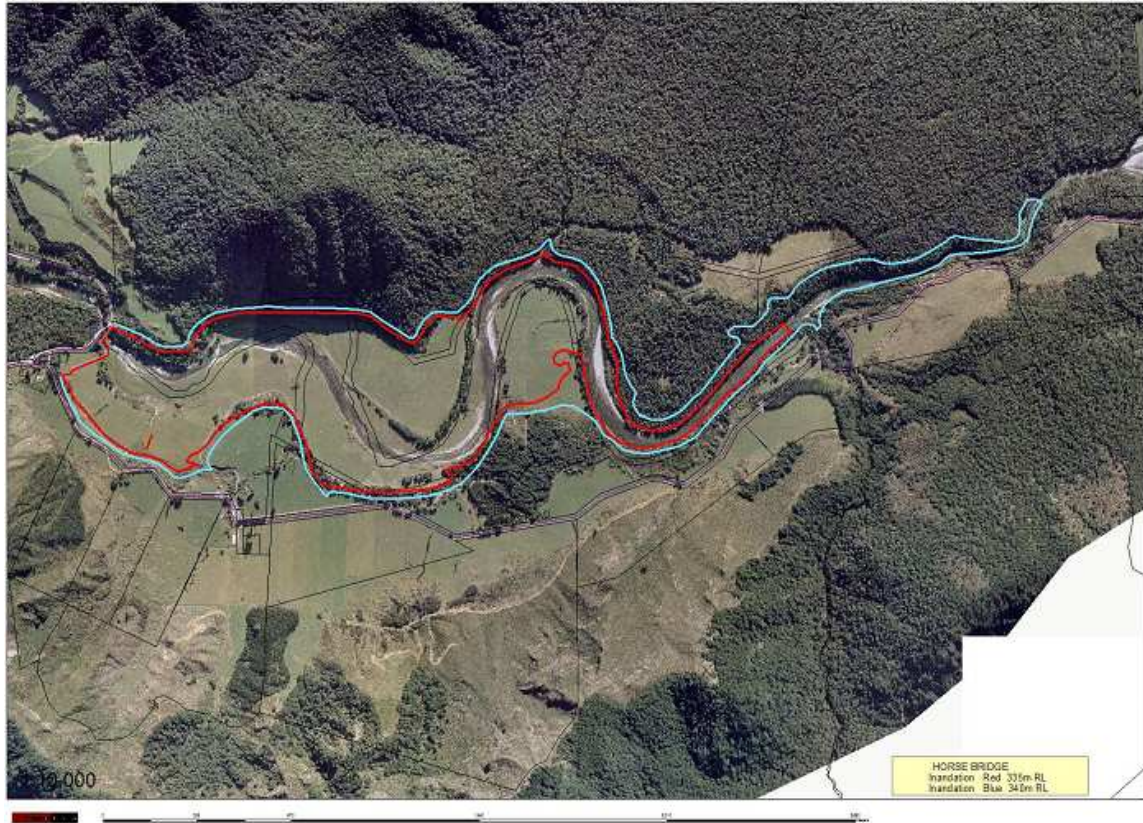
## Blue Rock

- Dam – Concrete
- Generating head 20m
- Normal top water level 230mRL



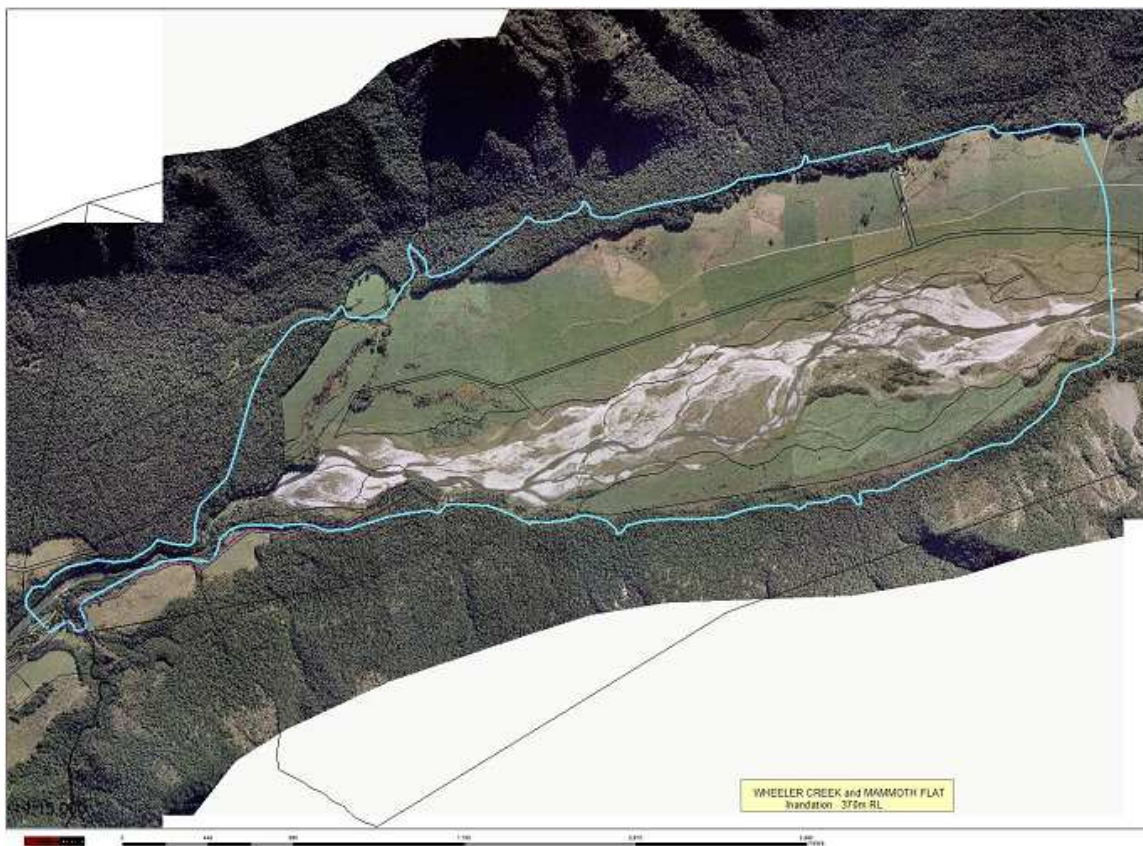
## Horse Bridge

- Dam – Concrete
- Generating head 43m
- Normal top water level 340mRL



### Wheeler's Creek

- Dam – Concrete
- Generating head 35m
- Normal top water level 370mRL
- Dam and canals
  - Generating head
    - residual flow 35m
    - upper canal 34m
    - lower canal 37m
  - Canal lengths
    - upper canal 2.5km
    - lower canal 0.6km



### Mammoth Gorge

- Dam – Concrete
- Generating head 30m
- Normal top water level 370mRL

## **Transmission**

1. New 110kv transmission line will be required
2. Monopole construction- no lattice towers
3. Will need to cross private property
4. Connect to Transpower's Murchison Grid Exit Point
5. Fibre optic cable for communications

## **What is our consultation process?**

### **1 Pre-feasibility consultation process**

- Including your perspectives and values in our decisions about generating electricity sustainably for our community in the Top of the South Island
- Meetings for local residents, landowners, river users, organisations, and agencies
- Written submissions from all interested parties

### **2 Next stage**

- Consultation feedback report to Network Tasman Ltd board - independently prepared by Peter Lawless and Barbara Graves
- Pre-feasibility Study Report to Network Tasman Ltd board
- Network Tasman Ltd board to consider next step (if any) after full consideration of above reports

### **4 To comment:**

- Complete a submission form
- Send a letter
- Send an email
- Ring us up

### **Contact details:**

PO Box 303 Nelson  
thelawlessedge @xtra.co.nz  
Barbara Graves 03 544 2247  
Peter Lawless 03 539 1074

## **Matakitaki Hydro Pre-feasibility Submission Form**

Submissions on Network Tasman investigations for hydro-generation on the Matakitaki River can be made to The Lawless Edge Ltd. All submissions will be kept confidential and used to compile a summary report for Network Tasman.

The summary report will be made public and may include non-attributed quotes from submissions to illustrate key points.

**What is your relationship to the Matakitaki River?**

**What do you value about the river and its environment that could be affected by hydro-generation?**

**What would you value about hydro-generation development on the Matakitaki?**

**What else would you like reported to Network Tasman?**

If you would like to receive further information please provide your contact details. These will not be divulged to any party without your agreement.

Send to PO Box 303, Nelson by 15 July 2009 or email to [thelawlessedge@xtra.co.nz](mailto:thelawlessedge@xtra.co.nz).